

GUIDELINES FOR YOUNG BAND

Degree 0,5

Musical score for young band instruments. The score is written for 13 instruments: Flute, Oboe (optional), Eb Clarinet (opt.), Bb Clarinet, Bb Bass Clar. (opt.), Soprano Sax (optional), Alto Sax, Tenor Sax (opt.), Baritone Sax (opt.), Bb Trumpet, F Horn (optional), C Trombone (opt.), C Euphonium (opt.), Bassoon (opt.), C Tuba (optional), and Timpani (optional). The score is written in 4/4 time and features a simple melody with chords. The instruments are grouped into woodwinds, brass, and percussion.

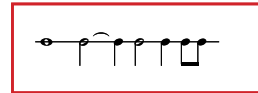
Percussion (max 3 players)

Piano (optional)

KEYS: B flat Major, E flat Major and relative minor keys.

TIME SIGNATURE: 2/4; 3/4; 4/4

RHYTHM: use of the following figures:



On short values, prefer unisons or diatonic passages.

Syncopation: not allowed

Offbeats: allowed



Musical pieces must not begin with an upbeat of eighth note.

DISTRIBUTION OF PARTS: Maximum use allowed: 3 real parts, as homorhythmic as possible.

INSTRUMENTATION : use the intervals taking into account the technical difficulties of the different instruments.

SOLOS : only if assigned to an entire section.

LENGTH: max. 3' approx; 5' approx if it consists of several movements.

AGOGIC: 72 bis 120 bpm. Rallentando and Corona.

DYNAMICS: p, mf and f.

ARTICULATION: accent, staccato, legato on two notes of joint degree and on easy intervals.

PERCUSSIONS : Max 3 performers between percussion 1 and 2 without bouncing rolls. The rhythmic may also be one degree higher.

Piano (optional) This part is to be created for the teachers and the conductor and must be of moderate difficulty. It must reproduce the contents of the song. If the musical language suggests it, it would be appropriate to add also the abbreviations of the chords that may be used by guitarists.

OPTIONAL: indicates that the instrument can be used but must not have any required parts.

GUIDELINES FOR YOUNG BAND

Degree 1

Flute

Oboe (optional)

Eb Clar. (opt.)

Bb Clarinet

Bb Bass Clar. (opt.)
(BASS LINE)

Soprano Sax (optional)

Alto Sax

Tenor Sax (opt.)

Baritone Sax (opt.)
(BASS LINE)

Bb Trumpet

F Horn (optional)

C Trombone
C Euphonium
Bassoon (opt.)

C Tuba (optional)

Timpani (optional)

KEYS: B flat Major , E flat Major, F Major and relative minor keys.

TIME SIGNATURE: 2/4; 3/4; 4/4

RHYTHM: use of the following figures:

On short values, prefer unisons or diatonic passages.

Syncopation: allowed

It is forbidden to use hemiola in the 3/4 tempo:

Offbeats: allowed

Musical pieces must not begin with an upbeat of eighth note.

DISTRIBUTION OF PARTS: Maximum use allowed: 4 real parts, as homorhythmic as possible.

INSTRUMENTATION : use the intervals taking into account the technical difficulties of the different instruments.

SOLOS : only if assigned to an entire section.

BASS-LINE: Unified and/or in 8th (bassoon, bass clarinet, baritone sax, trombone, euphonium, tuba).

LENGTH: max. 3' 30" approx; 6' 30" approx if it consists of several movements.

AGOGIC: 72 - 120 bpm. Rallentando, accelerando and corona.

DYNAMICS: p, mf, f, crescendo and diminuendo.

ARTICULATION: accent, staccato, legato on two notes on easy intervals.

PERCUSSIONS : Max 3 performers between percussions 1 and 2 with bouncing rolls and flan on quarter notes. The rhythmic may also be one degree higher.

Piano (optional) This part is to be created for the teachers and the conductor and must be of moderate difficulty. It must reproduce the contents of the song, always including the bass line.

If the musical language suggests it, it would be appropriate to add also the abbreviations of the chords that may be used by guitarists.

OPTIONAL : indicates that the instrument can be used but must not have any required parts..

Percussion (max 3 players)

Piano (optional)

GUIDELINES FOR YOUNG BAND

Degree 1,5

Flute

Oboe (optional)

E♭ Clar. (opt.)

B♭ Clarinet 1

B♭ Clarinet 2

B♭ Bass Clarinet (optional)

Soprano Sax (optional)

Alto Sax

Tenor Sax (opt.)

Baritone Sax (opt.)

B♭ Trumpet 1

B♭ Trumpet 2

F Horn (optional)

C Trombone
C Euph. (opt.)
Bassoon (opt.)

C Euphonium
C Trombone (opt.)
Bassoon (opt.)

C Tuba (optional)

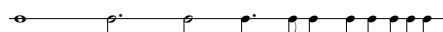
Timpani (optional)

Percussion (max 4 players)

Piano (optional)

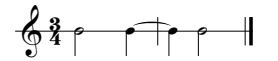
KEYS: B flat Major , E flat Major, F Major and relative minor keys.

TIME SIGNATURE: 2/4; 3/4; 4/4; 2/2

RHYTHM: use of the following figures: 

On short values, prefer unisons or diatonic passages.

Syncopation: allowed  It is possible to

use hemiola in the 3/4  provided that the writing is homorhythmic.

Offbeats: allowed  in any combination.

Music can begin with an eighth upbeat.

DISTRIBUTION OF PARTS: Maximum use allowed 5 real parts, as homorhythmic as possible.

INSTRUMENTATION : use the intervals taking into account the technical difficulties of the different instruments.

SOLOS : only if assigned to an entire section.

BASS-LINE: unified and/or in 8th (bassoon, bass clarinet, baritone sax, trombone, euphonium, tuba).

LENGTH: max. 4' 30" approx; 7' 30" approx if it consists of several movements.

AGOGIC: 72 - 132 bpm. Rallentando, accelerando and corona.

DYNAMICS: p, mp, mf, f, crescendo and diminuendo

ARTICULATION: accent, staccato, legato on two notes on easy intervals, on three notes on disjoint degrees.

PERCUSSIONS: max. 4 performers between percussion 1 and 2 with close rolls and flam on quarter notes. The rhythmic may also be one degree higher.

Piano (optional) This part is to be created for the teachers and the conductor and must be of moderate difficulty. It must reproduce the contents of the song, always including the bass line. If the musical language suggests it, it would be appropriate to add also the abbreviations of the chords that may be used by guitarists.

OPTIONAL : indicates that the instrument can be used but must not have any required parts.

GUIDELINES FOR YOUNG BAND

Degree 2

Flute 1

Flute 2 (optional)

Oboe (optional)

Bassoon (optional)

Eb Clarinet (optional)

Bb Clarinet 1

Bb Clarinet 2

Bb Bass Clarinet (optional)

Soprano Sax (opt.)

Alto Sax 1

Alto Sax 2

Tenor Sax

Baritone Sax (opt.)

Bb Trumpet 1

Bb Trumpet 2

F Horn 1

F Horn 2 (opt.)

C Trombone

C Euphonium

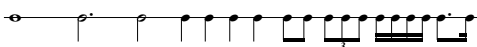
C Tuba

Timpani (opt.)

Percussion (max 4 players)

KEYS: B flat Major , E flat Major, F Major, C Major and relative minor keys.

TIME SIGNATURE: 2/4; 3/4; 4/4; 6/8; 2/2; 5/4

RHYTHM: use of the following figures: 

Easy syncopation and offbeats; use of simple rhythm combinations.

DISTRIBUTION OF PARTS: without the limitations indicated for the previous levels.

INSTRUMENTATION: Extensive use of guides to allow for execution even by incomplete or poorly balanced formations.

LENGTH: max. 6' 30" approx; 9' approx if it consists of several movements.

AGOGIC: 60 - 132 bpm, rallentando and accelerando, and different sections of metronome and tempo allowed.

DYNAMICS: p, mp, mf, f, ff, sf, fp, crescendo and diminuendo.

ARTICULATION: accent, short accent, staccato, tenuto, legato.

PERCUSSIONI: max 4 performers between percussions 1 and 2, use of rolls; the rhythmic may also be one degree higher.

OPTIONAL : indicates that the instrument can be used but must not have any required parts.